

Material: Centrifugally Cast Gray Iron.

Application: Cylinder liner and piston rings in general, not heat-treated.

Specifications

American - Classification ASTM - A 48, Class 30
German - DIN 1691 GG 30

Chemical Composition

Element	C	Si	Mn	P	S	Cr	Mo	Ni	Sn
%	3,0-3,6	2,0-2,7	0,5-0,9	0,2-0,65	≤ 0,10	0-0,50	≤ 0,40	≤ 0,50	≤ 0,25

Other elements may be present as impurities.

Mechanical properties

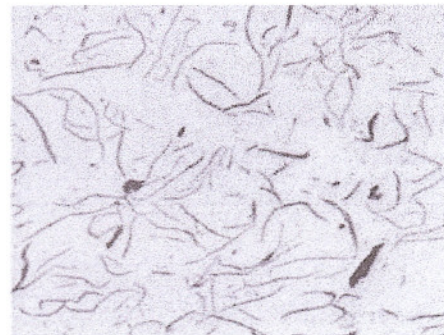
Hardness: 93 - 104 HRB, 200 - 270 HB
Tensile Strength: min. 270 N/mm²

Microstructure

Graphite: fine, lamellar and uniformly distributed. Preferably type A, size between 5 and 7.

Matrix: perlitic, with ferrite not exceeding 5%.

Note: Variations in composition ranges are admissible on condition that the structure and mechanical properties are not affected.



100:1 Non-etched



400:1 Etched with Nital